



YDF VALVES Presentation

Your Partner of Flow Control System

www.ydfvalve.com

Date: Jan, 2014





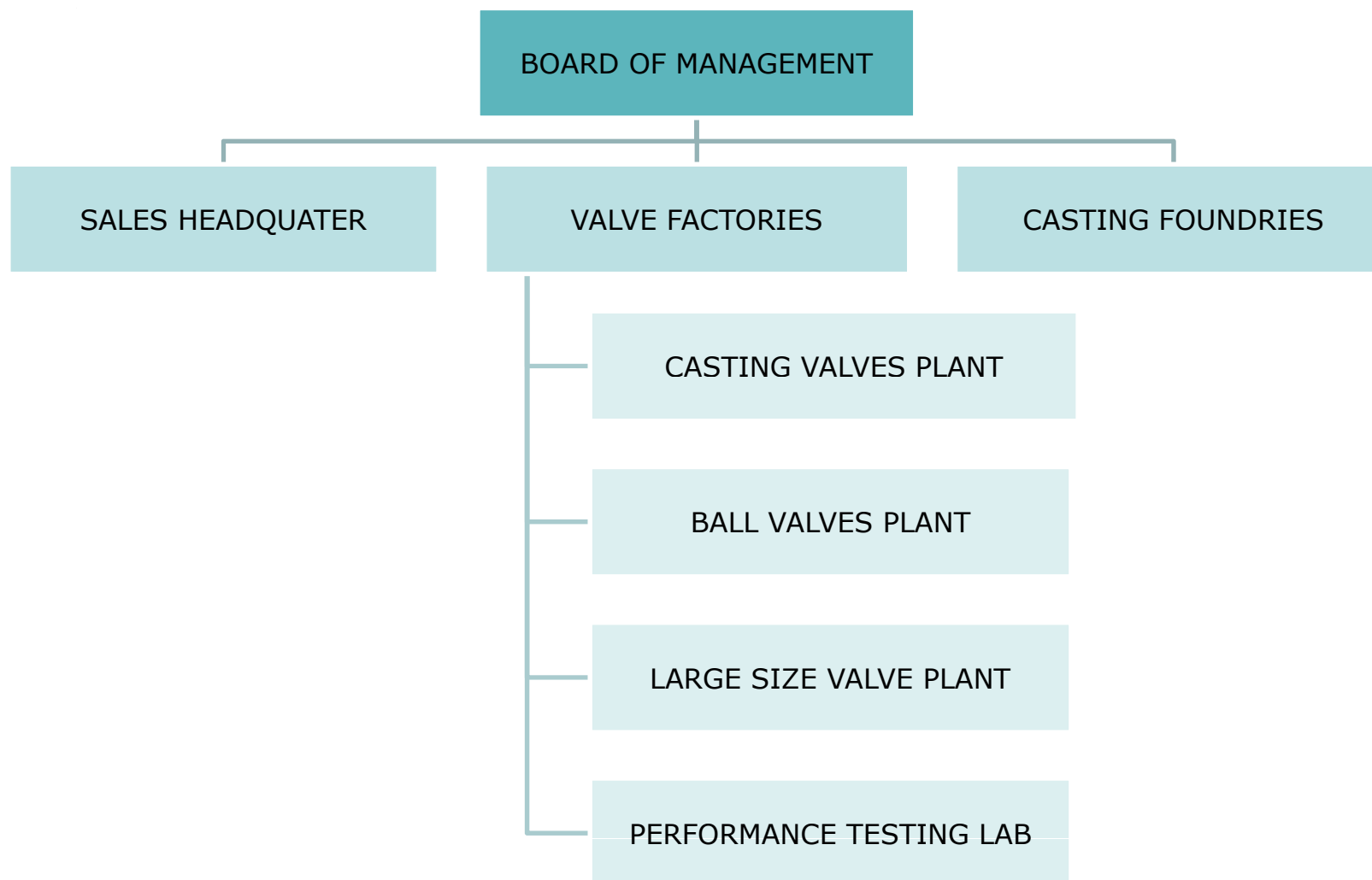
Milestone

- In 1978** ► Yancheng Power Station Valve Corporation. Produce high Pressure rating Gate, Globe and Check valves.
- In 1996** ► Jiangsu YDF valve co., LTD, ANSI gate valve, globe valve and check valve, export to US / AUS / Europe
- In 2002** ► Invest new workshop, start to work with Crane USA.
- In 2004** ► Invest Ball Valve Plant
Sign LTA (Long Term Agreement) with Crane Group.
- In 2009** ► Set up Sales Headquarter in Shanghai City, China
Invest Casting foundry in Jiangsu Binhai City, China
- In 2013** ► Invest Large Size Valve Plant
- In 2014** ► Invest Casting foundry II in Jiangsu Binhai City, China

YDF workshop total cover area more than 100,000 meter square



YDF Organization Chart



YDF Total Employees: 816



YDF Sales Headquarter

- Founded in Sep, 2009
- Location: Shanghai City
- Function: Marketing, Sales & Finance
- Employee: 16





CASTING FOUNDRY I



- Before 2009
Owned by Binhai Wanheng
YDF Took over in 2010
- Main Products / Capacity
Loss Wax 600T/Month
Sand Casting 600T/Month
- Covers Area: 40,000 sqm
Workshop: 33,000 sqm
Warehouse: 8,000 sqm
- Material: C.S. / S.S. / Alloy
- Employee: 450





CASTING FOUNDRY II



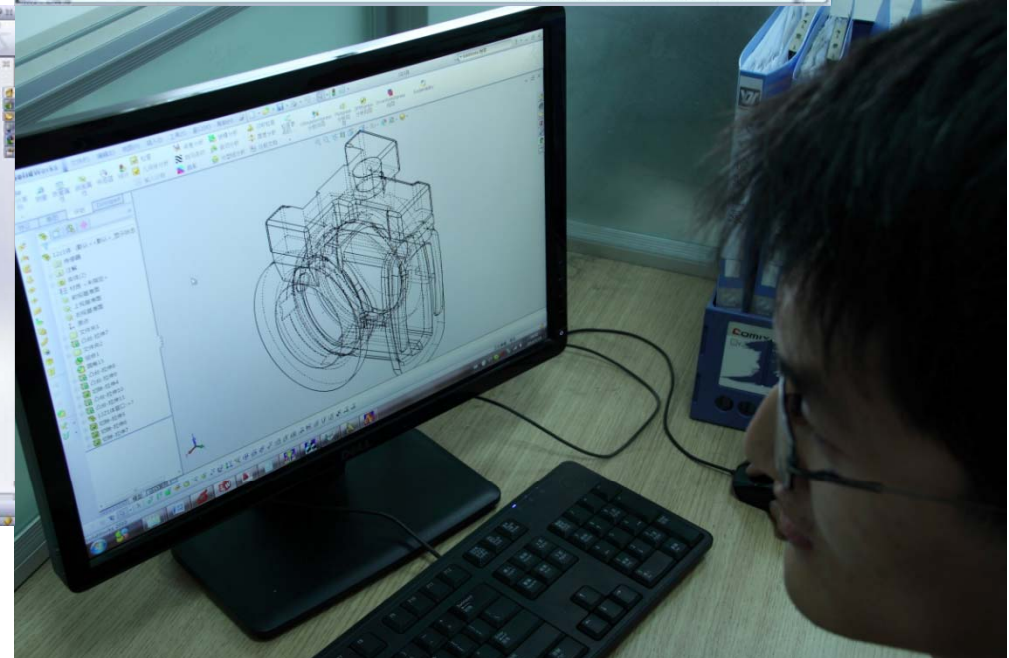
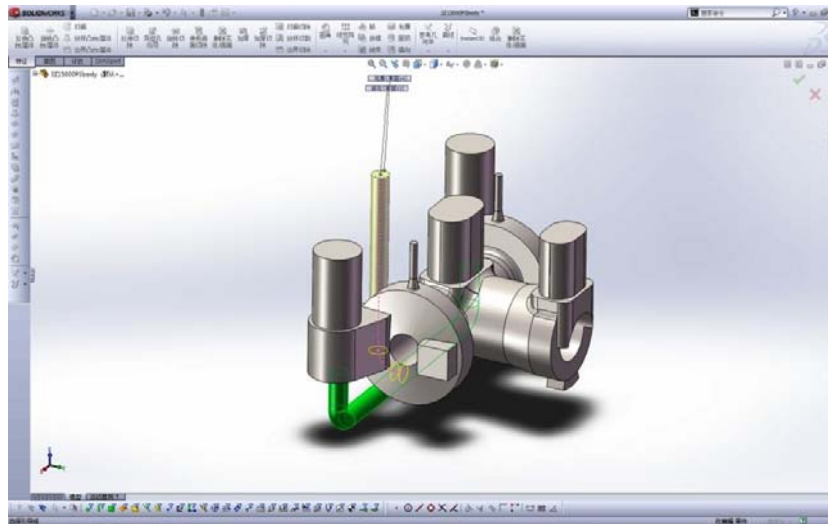
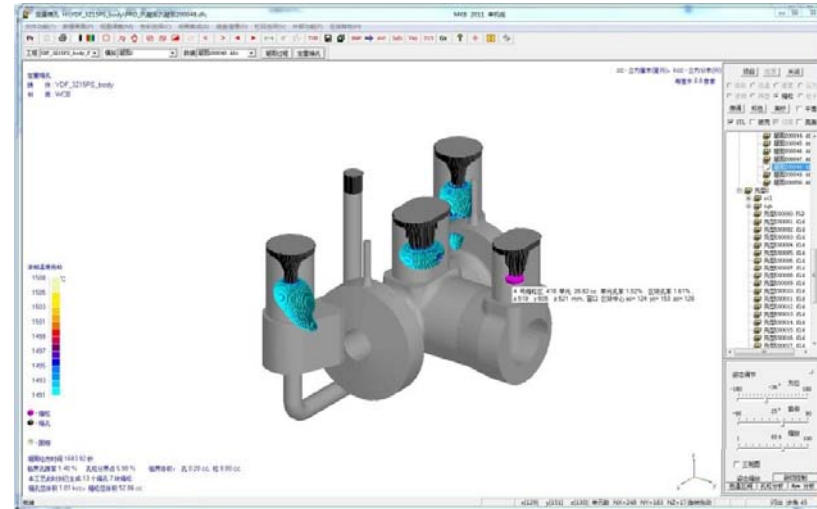
- Sep up in 2014 (1st Phase)
- Location : Binhai City
- Product : Loss wax / Sand Casting
- Capacity: 15000 T / Year
- Stainless, Duplex S.S., Alloy



Design on Casting



- Pattern Design
- Pouring System
- 3D Molding & Simulation



Lost Wax Investment Casting

In-house Production Process

- Wax Mold
- Wax lining
- De-waxing
- Mold Shell baking
- Melting & Pouring
- Riser Cutting & Grinding
- Heat Treatment
- Shot Blasting
- NDE
- Testing & Inspection



Sand Casting



In-house Production Process

- Sand Molding
- Melting & Pouring
- Riser Cutting & Grinding
- Heat Treatment
- Shot Blasting
- NDE
- Testing & Inspection





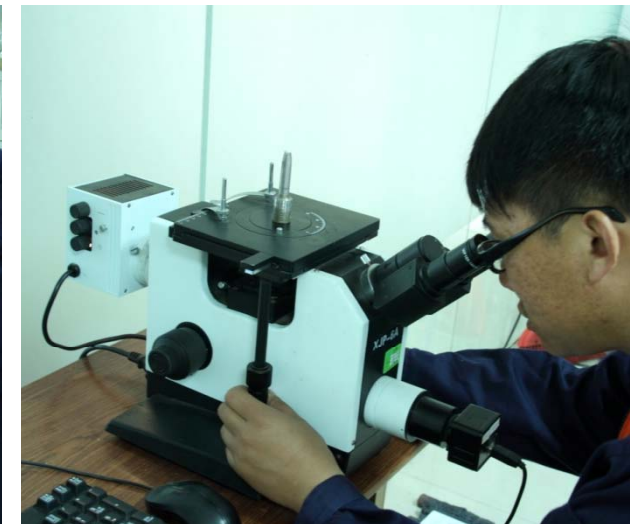
Foundry Main Equipment



- Wax Molding Line
- Electrical Melting Furnace
- Electrical Heat Treatment Furnace
- Quench Pool for water quench
- Nature Gas Heat Treatment Furnace
- Shot Blasting
- Heat Treatment
- Radiographic Testing Room



- Spectro Material Analysis
- Mechanical Property Measurement
- Micro-Structure Examination
- Hardness Testing
- Wall Thickness Measurement
- NDE (RT, MT)
- Melting Thermal Sensor





YDF Foundry Certificate



Certificate Accreditation

- ISO 9001:2008 (Issued By TUV)
- CE/PED (Issued by TUV)

Special Qualification

- WPS&PQR&WPQ certified by TUV (ASME IX and CE/PED)
- NDE (RT,MT,PT,UT), Level I &II, ASNT &EN475& ISO9712



Casting GGC VALVE PLANT



- Founded in Sep, 1996
- Location: Yancheng City, China
- Main Products: Casting GGC(OEM)
- Covers Area: 30,000 sqm
- Workshop: 20,000 sqm
- Warehouse: 5,000 sqm
- Max, Capacity: US\$40M/Year
- Employee: 130



Casting GGC VALVE PLANT





BALL VALVE PLANT



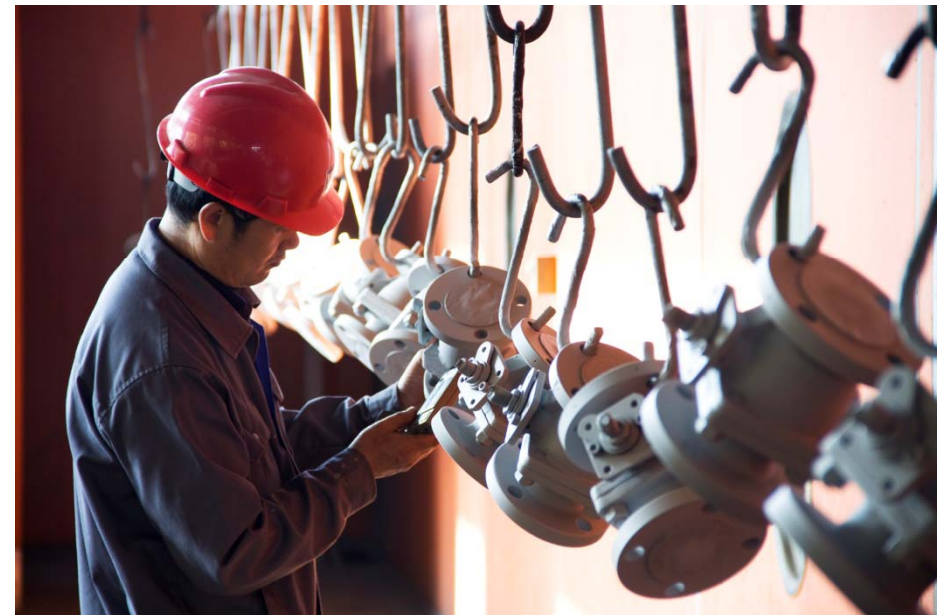
- Founded in May, 2004
- Location: Yancheng City, China
- Main Products: Ball Valve
- Covers Area: 35,000 sqm
- Workshop: 21,000 sqm
- Warehouse: 8,000 sqm
- Max, Capacity: US\$30M/Year
- Employee: 120



BALL VALVE PLANT



BALL VALVE PLANT





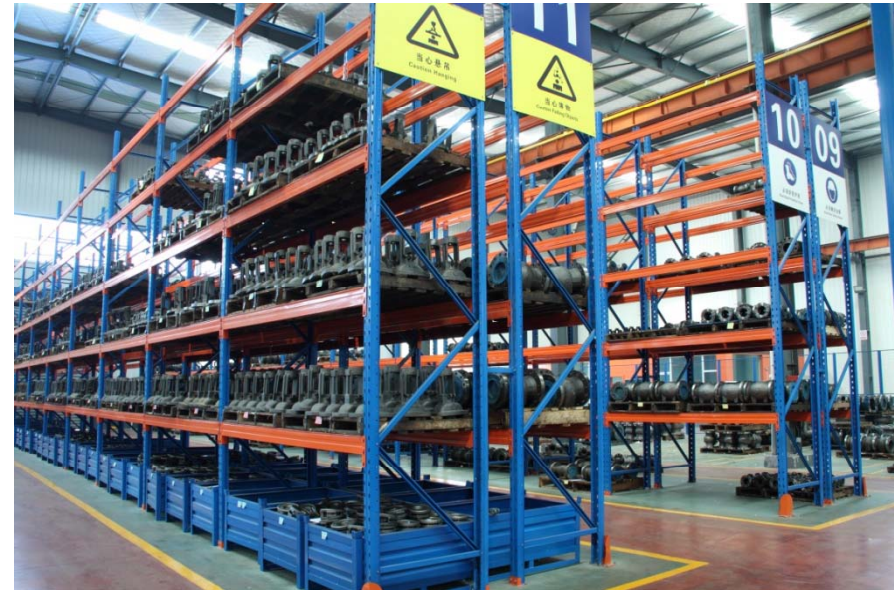
LARGE SIZE VALVE PLANT



- Founded in Sep,2012
- Location: YANCHENG City, China
- Main Products:
GGC, Ball, Large size valve, Special Valves
- Covers Area: 46,000 sqm
- Workshop: 28,000 sqm
- Max, Capacity: USD50M/ Year



LARGE SIZE VALVE PLANT



LARGE SIZE VALVE PLANT



LARGE SIZE VALVE PLANT



PERFORMANCE TESTING LAB



- Cryogenic Testing
 - (1/2~36 inch/150~2500LB)
- Fugitive Emission Testing
- High Temperature Testing
- Vacuum Testing
- High Pressure Gas Testing
 - Upto 2500LB
- Cleaning Room
 - Capable for Oxygen Service





VALVES WE PRODUCED



Conventional
Casting GGC
Valves

High Temperature
& High Pressure
Valves

Ball Valves

YDF VALVES

Actuator Valves

Pipeline Valves

Valve with Alloy
Material & Cladding



Ball Valve Series

Floating Ball Valve



Structure

- Uni-body Casting
- Split Body Casting
- Split Body Forging
- Fully Welded

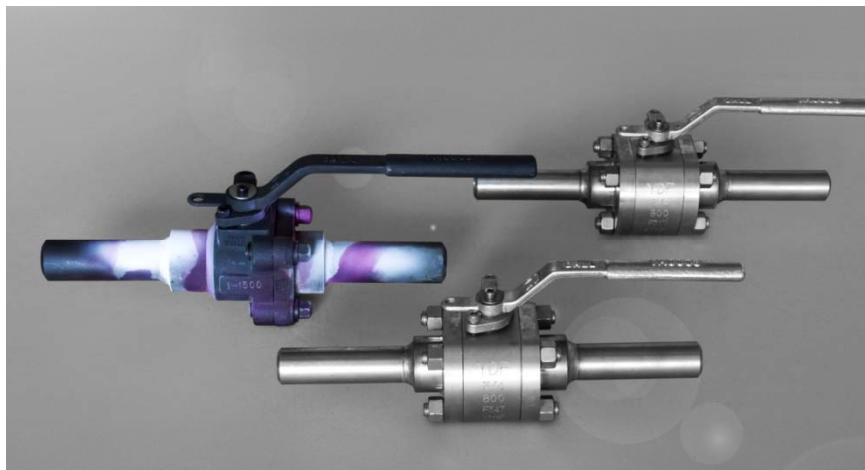
Design Feature

- Soft Seated
- Metal to Metal
- Fire Safe Tested
- Cavity Pressure Relief
- Cryogenic
- Anti blow proof Stem
- Low Emission
- Anit-Static



Ball Valve Series

Floating Ball Valve





Ball Valve Series

Trunnion Mounted



Structure

- Split Body Casting
- Split Body Forging
- Fully Welded
- Top Entry

Design

- Double Piston
- DBB
- Soft Seated
- Metal to Metal
- Anti Blow proof stem
- Anti-Static
- Cryogenic
- Fire Safe Tested
- Cavity pressure Relief
- Emergency Sealant injection



Ball Valve Series

Trunnion Mounted





Ball Valve Series

Trunnion Mounted





GGC Valve Series



Main Series

- API 600 Casting
- API 602 Forging
- API 603 S.S.
- Power Station
- Dual Plate Check

Design Feature

- Bellow Seal
- Cryogenic
- Pressure Seal
- None Rising Stem
- Low emission

Conventional GGC Valve Series



Conventional GGC Valve Series



Conventional GGC Valve Series





API 6D Pipeline Valve

Main Series

- API 6D Through Conduit Gate Valve
- API 6D Fully Welded Ball
- API 6D Full Opening Swing Check

Design Feature

- Full Opening
- Soft seated
- Metal Seated
- Low emission
- DDB, Double piston
(For API 6D Gate, Ball)



Actuator Valve



Main Series

- Electrical Actuator
- Pneumatic Actuator
- Electrical Hydraulic
- Gas Over oil

Main Actuator Brand

- RTORK
- Limit Torque
- Auma
- Beffi

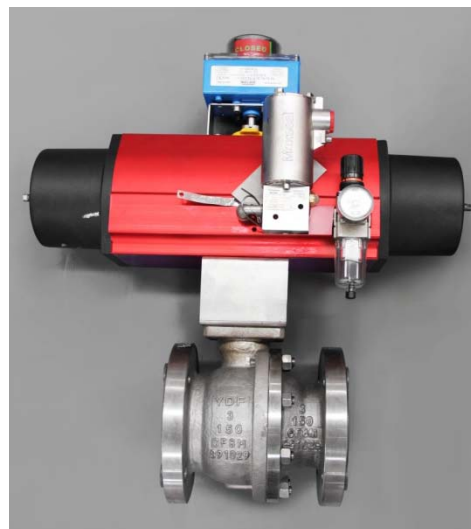
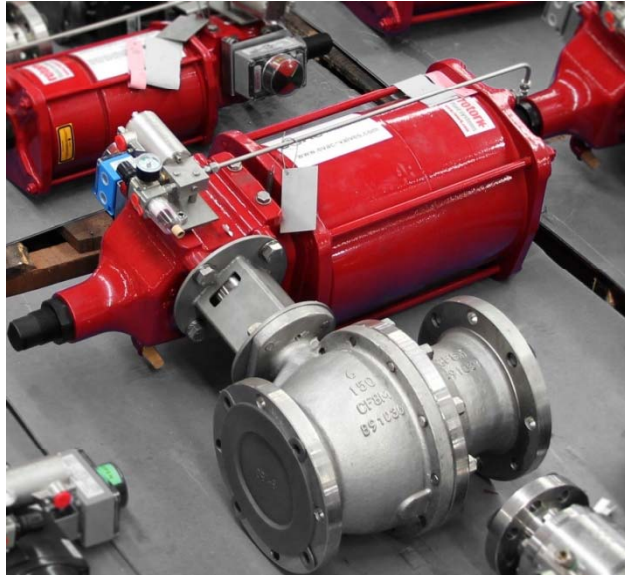
Main Accessory Brand

- ASCO
- PARKER
- SMC
- Westlock Etc.



Professional Automation Engineering Service

Actuator Valve





Main Equipment



Machining

- Lathe
- Vertical Lathe
- Drill Machine
- CNC
- Machining Center

Welding

- Automatic GTAW (Seal Welding upto 36")
- Conventional Manual Welding (Any Size)
- Submerged arc welding (SAW) (up to 40inch)
- Submerged arc welding (For overlay, STL, S.S., Cr13, Inconel etc.)

Crane & Fork lift

- 0.5~32 ton overhead Cranes(capable for 60inch)
- Fork Lift upto 6 meter high, upto 5 ton

Heat Treatment

- Electrical heat treatment furnace
- Nature gas heat treatment Furnace
- Vacuum PWHT furnace (For NACE Treatment)

Painting workshop

- Shot Blasting
- Capable for Offshore & high Temperature Painting
- Tools of (dew point, coating thickness, humidity)

In-house Testing Lab

- PMI
- Tensile Testing
- Impact Testing
- Hardness Testing
- Micro Examination
- Corrosion Testing
- X & y Ray RT
- PT, MT, UT etc

Performance Testing Lab.

- High pressure gas(up to 600Bar compressor air)
- High temperature Testing
- Fugitive Emission Test(He Gas)
- Cryogenic Testing



Certificate & Qualification



Certificate Accreditation

- ISO 9001
- ISO 14001, OHSAS18000
- API 6D
- CE/PED
- ATEX
- API 607&6FA fire safe
- API 624 (Low Emission)
- API600
- API 591
- ABS

Special Qualification

- WPS&PQR&WPQ certified by TUV (ASME IX and CE/PED)
- NDE (RT, MT, PT, UT), Level I & II, ASNT & EN475 & ISO9712
- NACE certified QC for Coating & Painting

86 Engineers engaged in design, research, process quality and Laboratory.



Engineering



- 3D molding and finite element analysis - Solid Works
- Drawing Sketch – AutoCAD software
- BOMs & Material become real time – Through the ERP System
- Casting Simulation molding & Pouring – Huazhu

YDF have the engineer who have more than 30 years valve design experience.



Casting & API 591 Testing



- YDF valve were from YDF own foundry with Integral strict Engineering & Quality Control. Material were qualified per API 591.
- Design Complied to API 591, type testing were certified pass by United valve USA (Exxon mobile nominated laboratory)

Without good Casting can not make good valves, YDF invested two high quality casting foundries



End User Approval



Approvals We have

- Exxon Mobile
- PetroBras
- PetroNas
- Santos
- SBM Offshore(Singapore)
- NIGC
- VOPAK (FOR ECON)
- Flour
- Air Product

Approvals undergoing

- BP
- DuPont
- Chevron
- Total



Your Partner of Flow Control System



Thank You!